

OFFICE/WAREHOUSE SPACE  
FOR SUBLEASE

# Clear Creek Business Center

6820 N. BROADWAY | UNIT H & I | DENVER, CO 80221

## Building Information

- > Space Available: 2,336 SF
- > Available: Immediately
- > Office: 75%
- > Loading: One (1) Drive-In (Additional Drive-In Possible)
- > Power: 100 Amp, 120/208 volt, 3-Phase (to be verified)
- > Zoning: PUD
- > Parking: 2.7:1,000 SF parking ratio
- > Lease Rate: \$10.00/SF NNN
- > Est. Expenses: \$6.85/SF

## Highlights

- > High speed Internet access available
- > Individual HVAC units
- > Highly visible and accessible at the confluence I-25, US-36, and I-76
- > Responsive, professional management

For more information please visit:  
[www.clearcreekleasing.com](http://www.clearcreekleasing.com)

T.J. SMITH, SIOR  
303 283 4576  
tj.smith@colliers.com

MATT KEYERLEBER  
720 284 7100  
matt.keyerleber@colliers.com

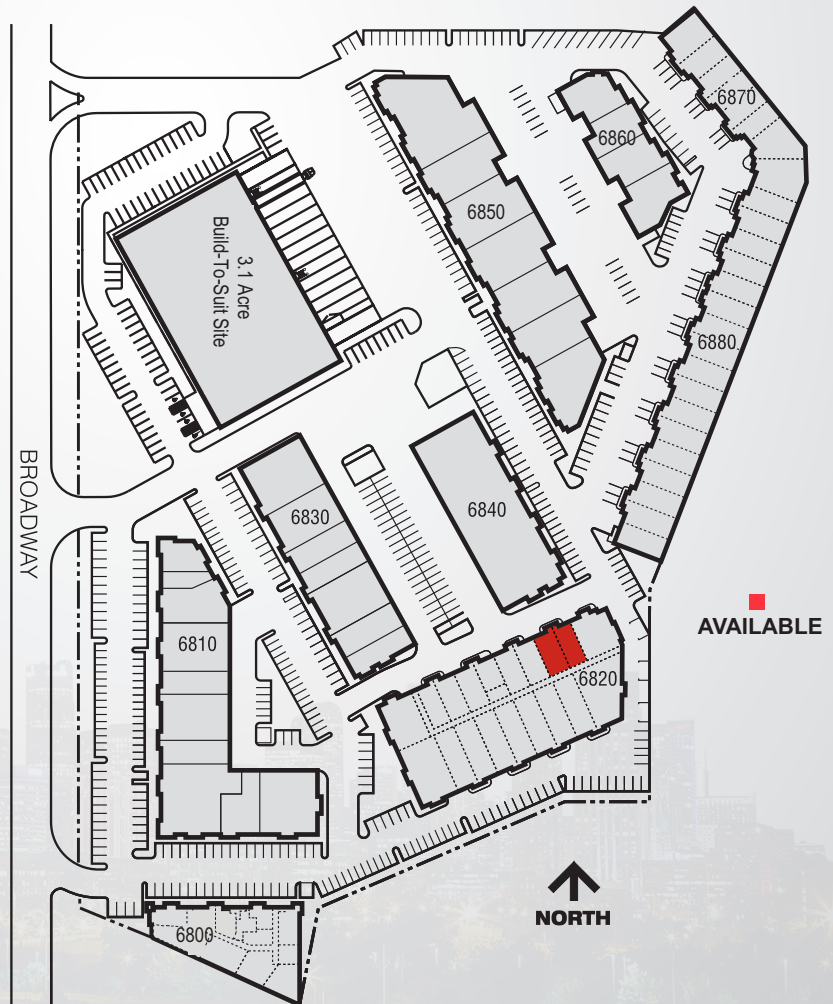
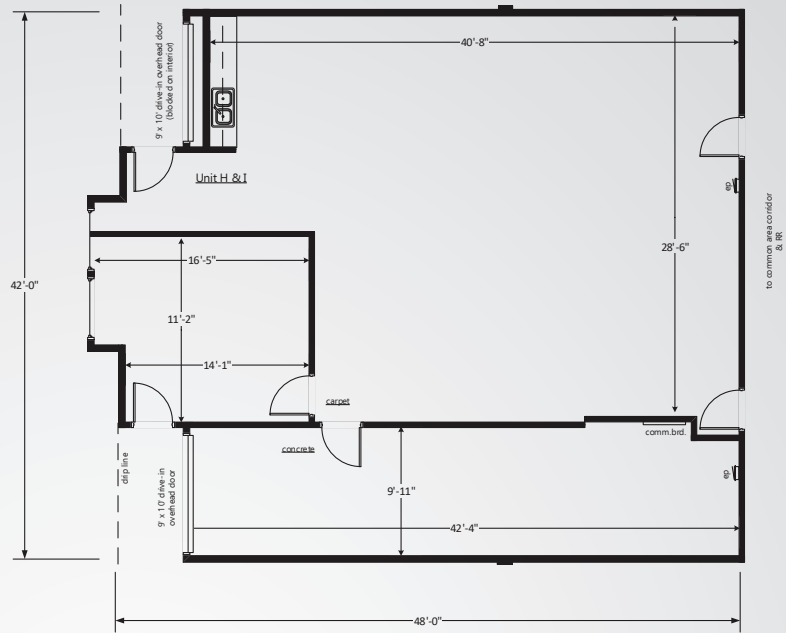
Accelerating success.

Clear Creek Business Park  
 6820 N. Broadway  
 Unit H & I  
 Denver, CO 80221

## Contact Us

COLLIERS | DENVER  
 4643 South Ulster Street  
 Suite 1000  
 Denver, CO 80237  
 MAIN +1 303 745 5800  
 FAX +1 303 745 5888

[www.colliers.com](http://www.colliers.com)



BROKERAGE  
 DISCLOSURE