

OFFICE/WAREHOUSE SPACE  
FOR SUBLEASE

# Clear Creek Business Center

6820 N. BROADWAY | UNIT A | DENVER, CO 80221

## Building Information

- › Space Available: 2,174 SF
- › Available: Immediately
- › Office: 100%
- › Power: 100 Amp, 120/208 volt, 3-Phase (to be verified)
- › Zoning: PUD
- › Parking: 2.7:1,000 SF parking ratio
- › Lease Rate: \$10.50/SF NNN
- › Est. Expenses: \$5.61/SF

## Highlights

- › High speed Internet access available
- › Individual HVAC units
- › Highly visible and accessible at the confluence I-25, US-36, and I-76
- › Responsive, professional management

For more information please visit:  
[www.clearcreekleasing.com](http://www.clearcreekleasing.com)

T.J. SMITH, SIOR  
303 283 4576  
[tj.smith@colliers.com](mailto:tj.smith@colliers.com)

MATT KEYERLEBER  
720 284 7100  
[matt.keyerleber@colliers.com](mailto:matt.keyerleber@colliers.com)

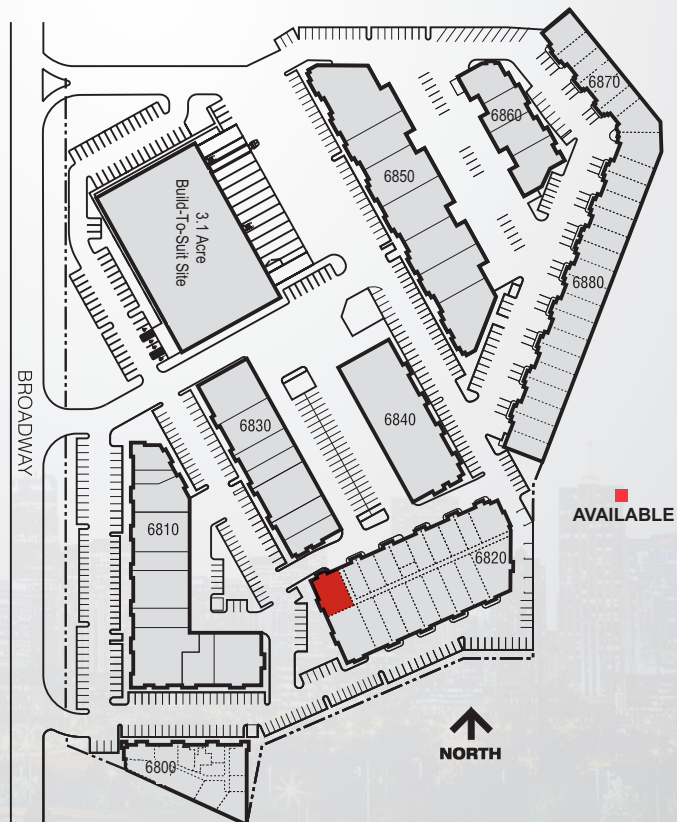
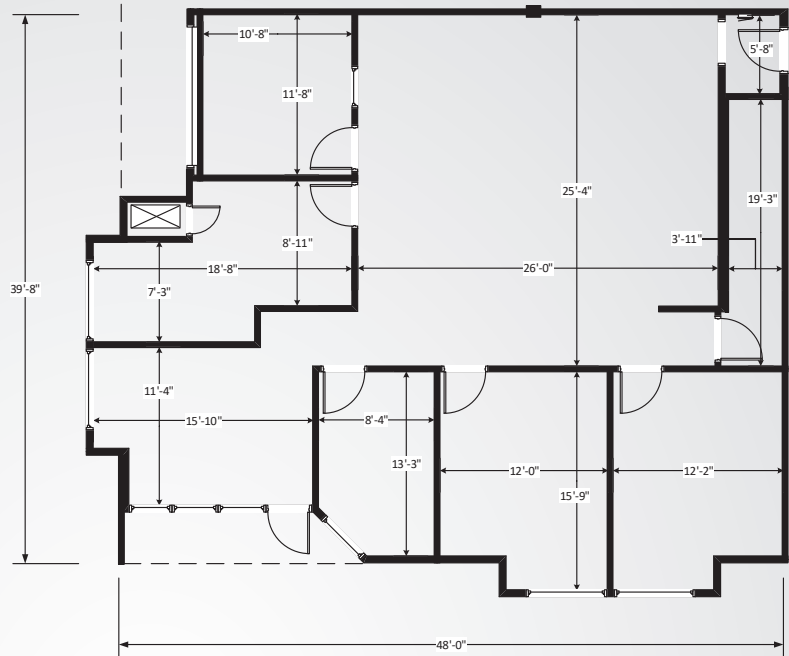
Accelerating success.

Clear Creek Business Park  
6820 N. Broadway  
Unit A  
Denver, CO 80221

## Contact Us

COLLIERS | DENVER  
4643 South Ulster Street  
Suite 1000  
Denver, CO 80237  
MAIN +1 303 745 5800  
FAX +1 303 745 5888

[www.colliers.com](http://www.colliers.com)



BROKERAGE  
DISCLOSURE